

Hexagons on Hexagons Mini Quilt

By
Emma Jones - Vintage Sewing Box

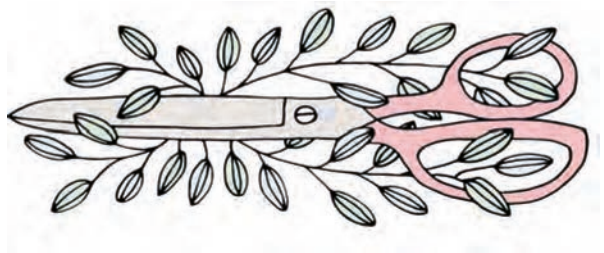


This lovely mini quilt measures approximately 8 1/4" wide from corner to corner. It is simple and relaxing to make, and the perfect introduction to tiny 1/4" hexagons! It uses English paper piecing, appliqué and embroidery techniques. I use hexiform shapes rather than paper shapes. Hexiform shapes are a type of fabric stabiliser and are designed to be left in, making the process easier. They also add a lovely texture. The instructions below are for using hexiform which can be bought from my website www.vintagesewingbox.co.uk or from www.ashmeaddesigns.com who make the shapes. If you use paper instead, you will need to remove your papers before you appliqué your hexagons.

Tool Kit and Supplies

Basic Sewing Kit - scissors, needles, thread etc

- Sharp needle for EPP and appliqué
- Fine thread for EPP and appliqué
- Embroidery needle
- Embroidery threads in your chosen colours
- Sewline glue pen for EPP
- Clover wonder clips and pins



- 42 x 1/4" hexagon paper or hexiform shapes.
- 7 x 1" hexagon paper or hexiform shapes.
- A piece of foam or wadding 9" x 9"
- Floral print cotton 9" x 9"
- Plain cotton backing fabric (this also forms the edge of the piece) - 11" x 10"
- A strip of plain cotton to make the 1" hexagons, 21" long x 2.5" wide
- Fabric scraps for the tiny 1/4" hexagons



Instructions

1. Create your 1/4" hexagon flowers by basting your 42 hexagons with fabric and stitching them together into groups of 7. I use a glue pen to baste the shapes and I sew them together using a whip stitch. For more detail on how to make a hexagon flower, see my [English paper piecing for beginners](#) playlist on Youtube.

2. Baste the 1" hexagons and sew them together into a flower.



3. Using an applique stitch, applique your 1/4" hexagon flowers onto each of the outside hexagons of the larger flower. Embroider a lazy daisy and French knot flower in the centre.

4. Place "hexagon template 1" onto your floral fabric and cut out. Repeat with foam or wadding. Place your floral fabric hexagon right side up on top of your foam hexagon, pin to hold it in place and sew around the entire edge using a 1/4" seam allowance.



5. Position your hexagon flower in the centre of your large hexagon and appliqué in place.

6. Fold your backing fabric in half so it measures 11" x 5". Place "hexagon template 2" onto the fabric, lining up the long edge with the fold. Cut out and unfold to have a full hexagon. Place your backing fabric right side down and put your hexagon in the centre, lining up the corners.



7. Fold each edge in by a quarter inch and in again to encase the raw edge of the fabric. Clip or pin in place. Take care to line up the mitred corners.

8. Stitch the edge down using an appliqué stitch.
Take care to stitch the mitred corners in place too.

9. Your piece is complete! Attach a ribbon or
some lace to the back and hang it on the wall! I
hope you enjoyed making it, thank you so much
for choosing to make one of my patterns.

